



# **Ice Break 2013**

# **Welcome**

**Summer School on  
Symmetric Cryptology  
Iceland June 6-12**

# **Schedule until next Wednesday**

Morning sessions from 8.30 to 10.00  
and 10.30 to 12.00

Lunch from 12.00 to 13.30

Afternoon session from 13.30 to 15.00  
and from 15.30 to 17.00

Coffee breaks from 10.00 to 10.30  
and 15.00 to 15.30

Different schedule for  
Saturday afternoon and Sunday

# Misc

Internet access:

- Eduroam and HR-Guest passwords

Lunch vouchers:

- From Marian

Coffee-break:

- Just outside the lecture room

Dinners:

- You are on your own
- Except Saturday...

# Saturday lunch and dinner

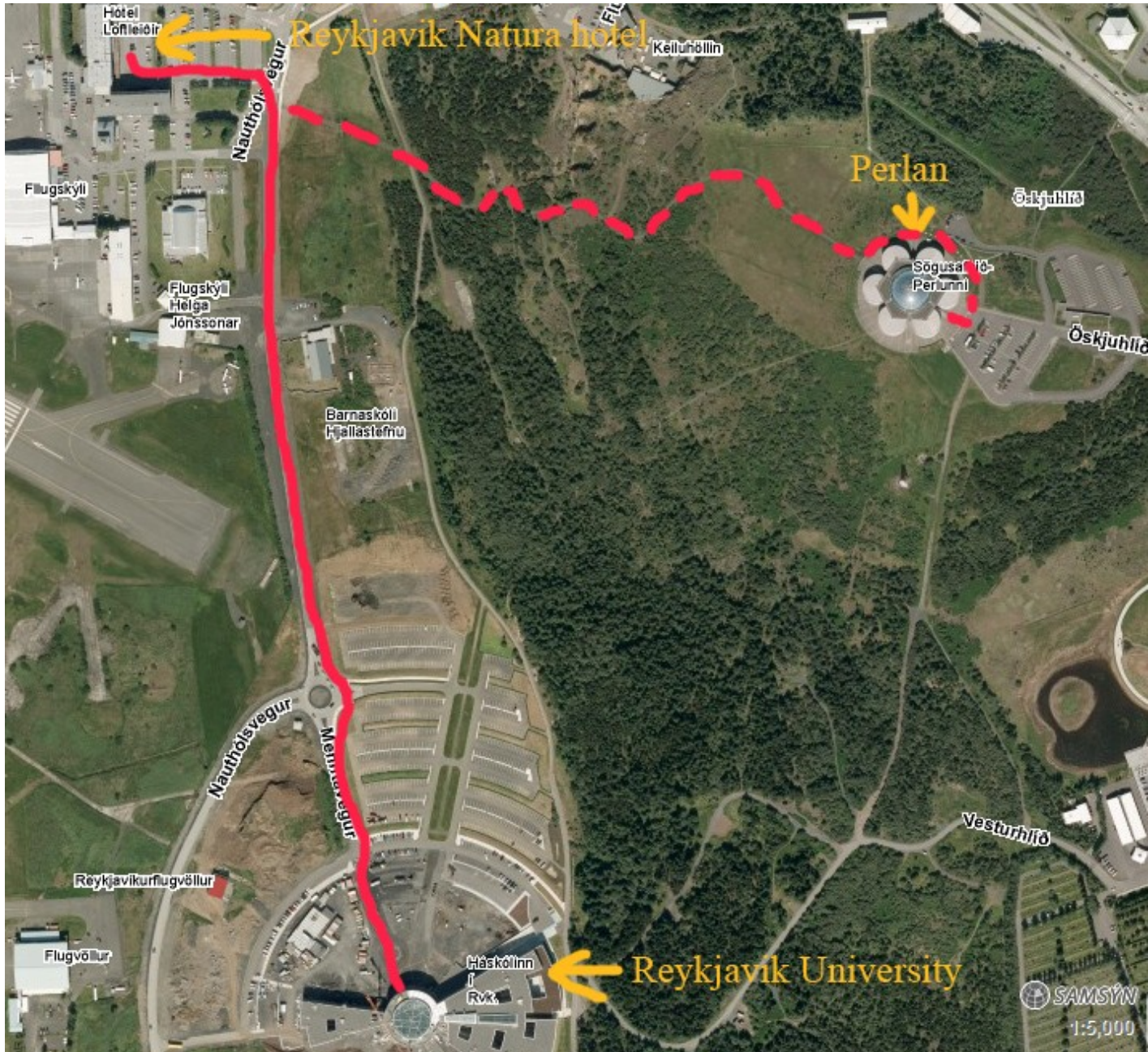
Saturday lunch at Restaurant “Satt” close to Hotel “Natura”

Special dinner at “Perlan”

Check with Marian for  
Fish/Lamb/Vegetarian choice

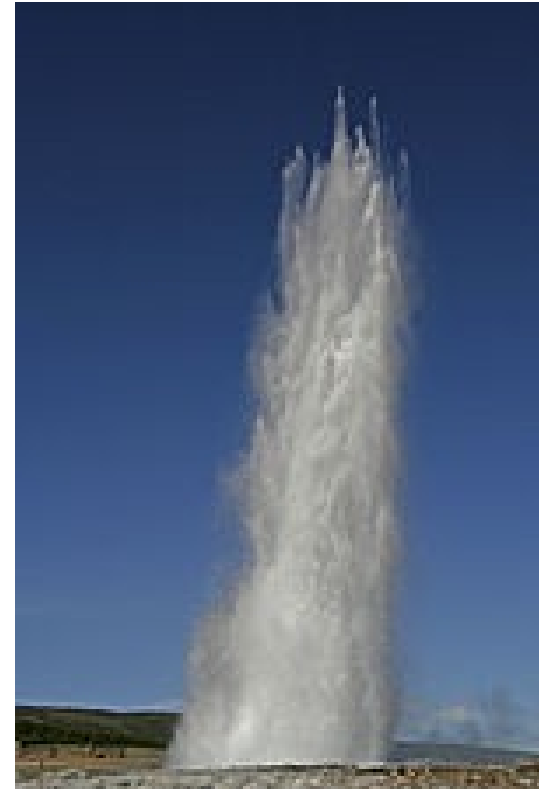
Both in walking distance from here





# Sunday: Full day excursion

Golden circle, 8h



Tentative departure time: 9.30am, location: TBA

We will organize shuttle transport from Hotels Natura and Capital Inn to departure point in the center before that

# **Student session: Tuesday morning**

Your opportunity to share your current work with others.

Contact me for a slot: [crec@dtu.dk](mailto:crec@dtu.dk)

An aerial photograph of a vast, flat, icy landscape, likely a frozen body of water or a large ice field. The ice is broken into numerous irregular, polygonal floes of varying sizes, creating a mosaic-like pattern. A small, dark boat is visible in the middle ground, leaving a narrow trail of open water behind it. The horizon is flat and distant, with a pale, overcast sky above.

# **Ice Break 2013**

**Summer School on  
Symmetric Cryptology  
Iceland June 6-12**